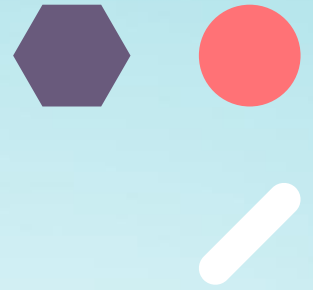




TimeXtender

Data & Automation Line Up 2024



---

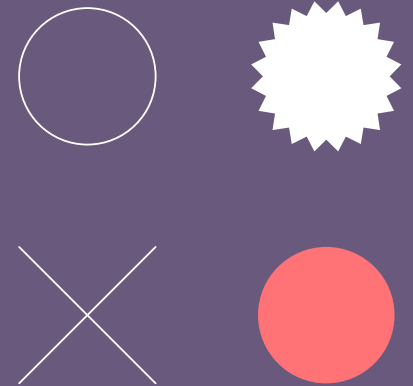
Boy Claesen  
Data Engineer @ Rockfeather



---

# AGENDA THE COMING 20 MINUTES

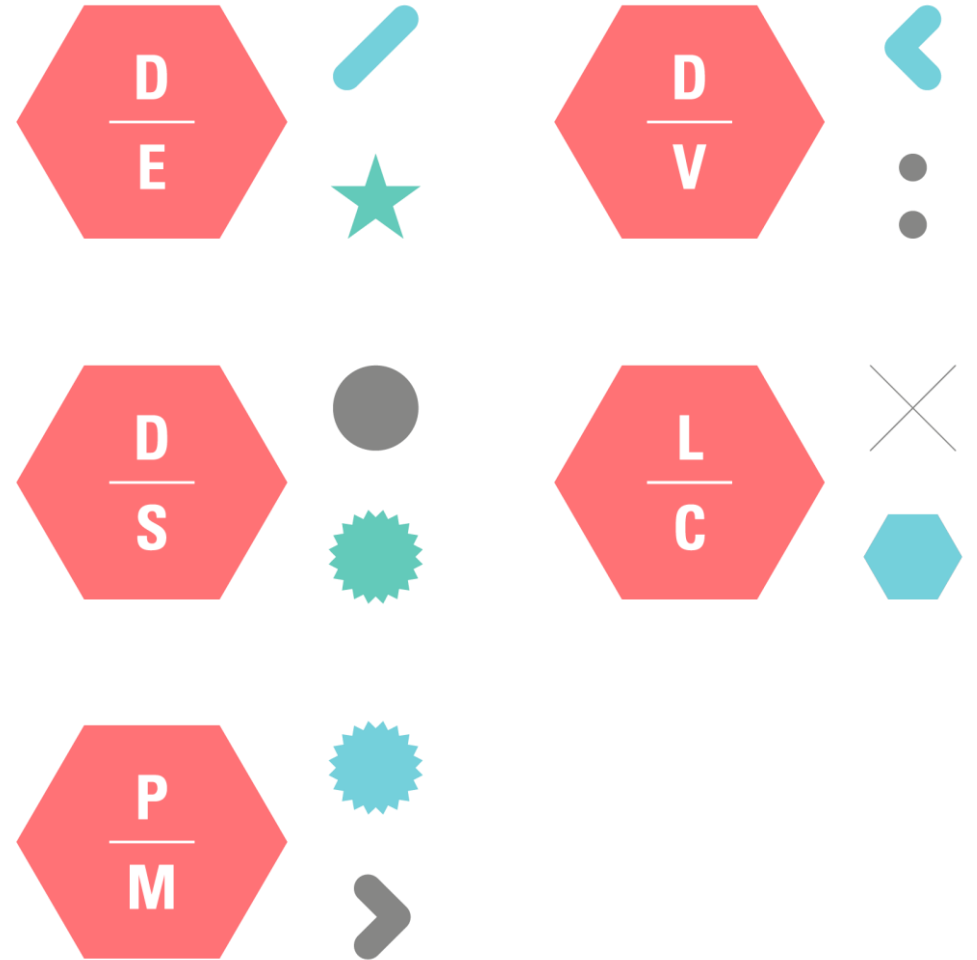
- Introduction TimeXtender
- A TimeXtender solution
- Usecase at Axxence
- Benefits
- Costs Calculator
- Demo TimeXtender Portal and Desktop



---

## About Rockfeather

At Rockfeather, we're not just consultants; we're dream builders. We turn your Data & Automation vision into reality, using the power of technology to bring your ideas to new heights. Working hand-in-hand with you, we empower you to achieve your goals. Ready to see your solid ideas take flight? Partner with Rockfeather today, and let's start a journey of innovation and success. Together, there's no limit to what we can achieve.



---

## Our technologies

---



Tableau



Power BI



Azure Data Factory



TimeXtender

---



DBT



Power Apps



Azure Logic Apps



Azure ML

---



Databricks



Outsystems



Acterys



Alteryx

---



Power Automate



Process Science



Python



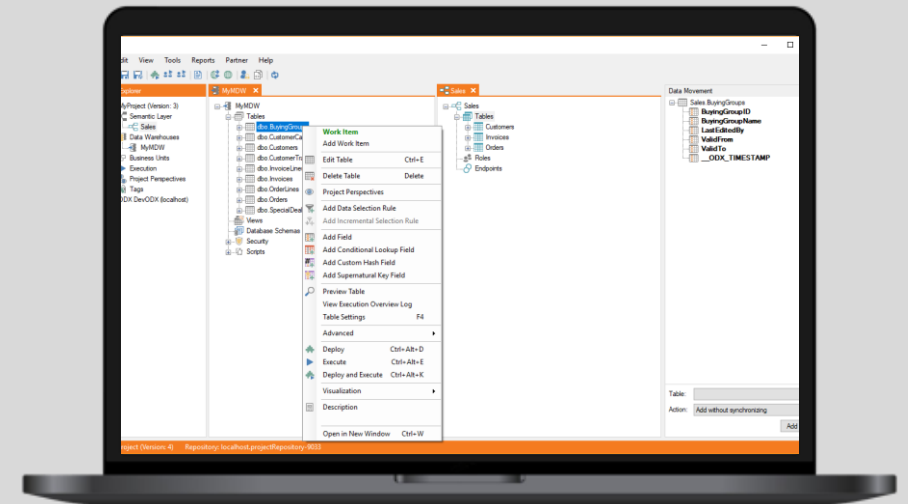
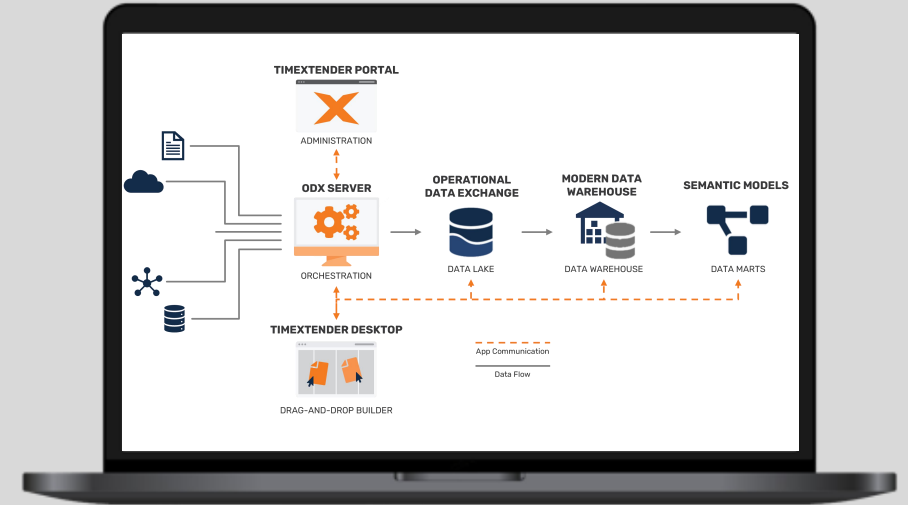
Airbyte

---

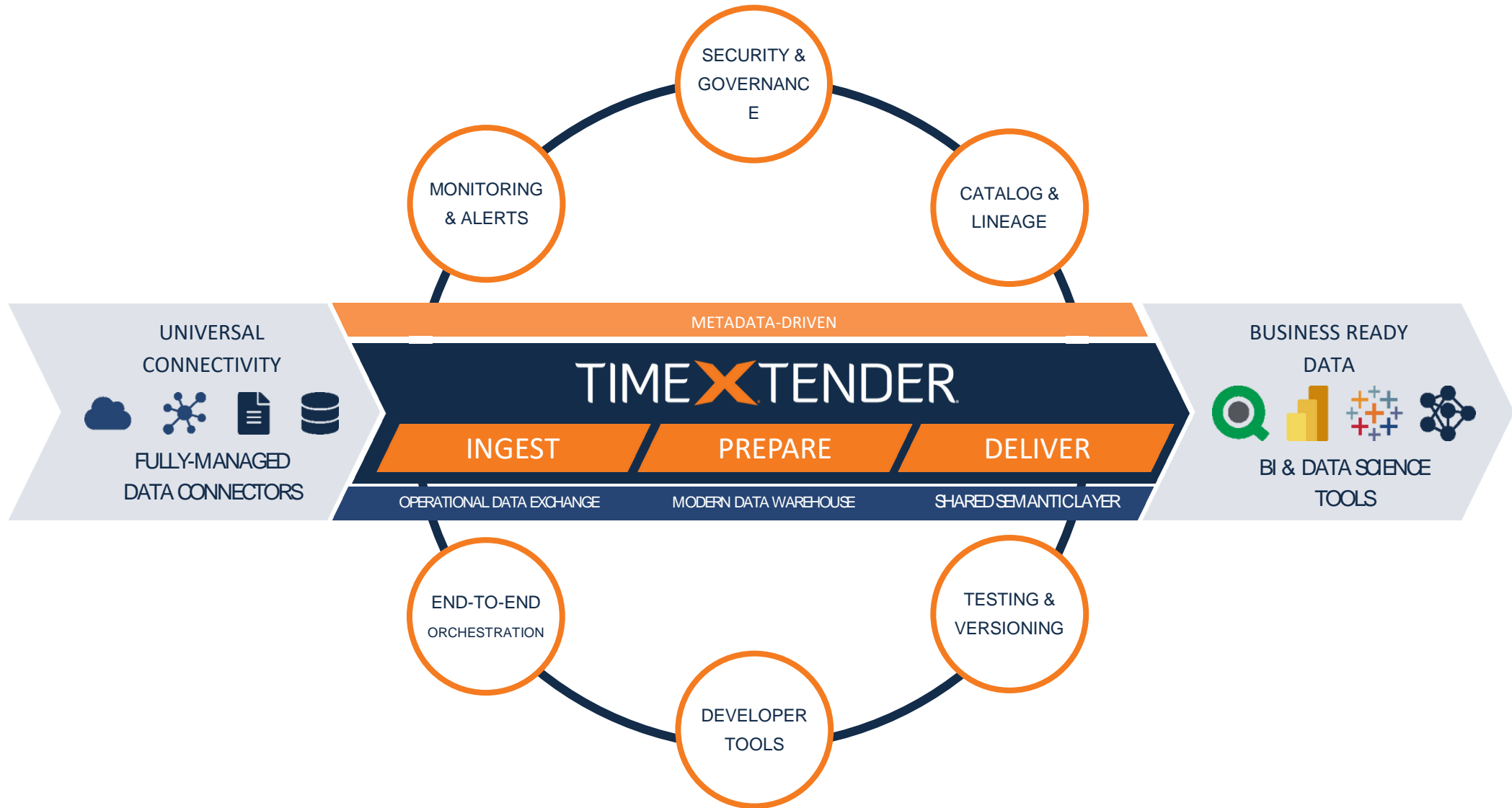
# TimeXtender

TimeXtender is an integrated data management platform that enables you to build a modern data estate (data warehouse). With TimeXtender, you will not use a traditional working environment with many separate tools and manual scripts. The 'Data management platform' uses an Operational Data Exchange (ODX) in which you can connect to 250 data sources and load data. With the loaded data, you can build your modern data warehouse (MDW), where you do all your transformations. On top of the MDW, you make a Semantic layer.

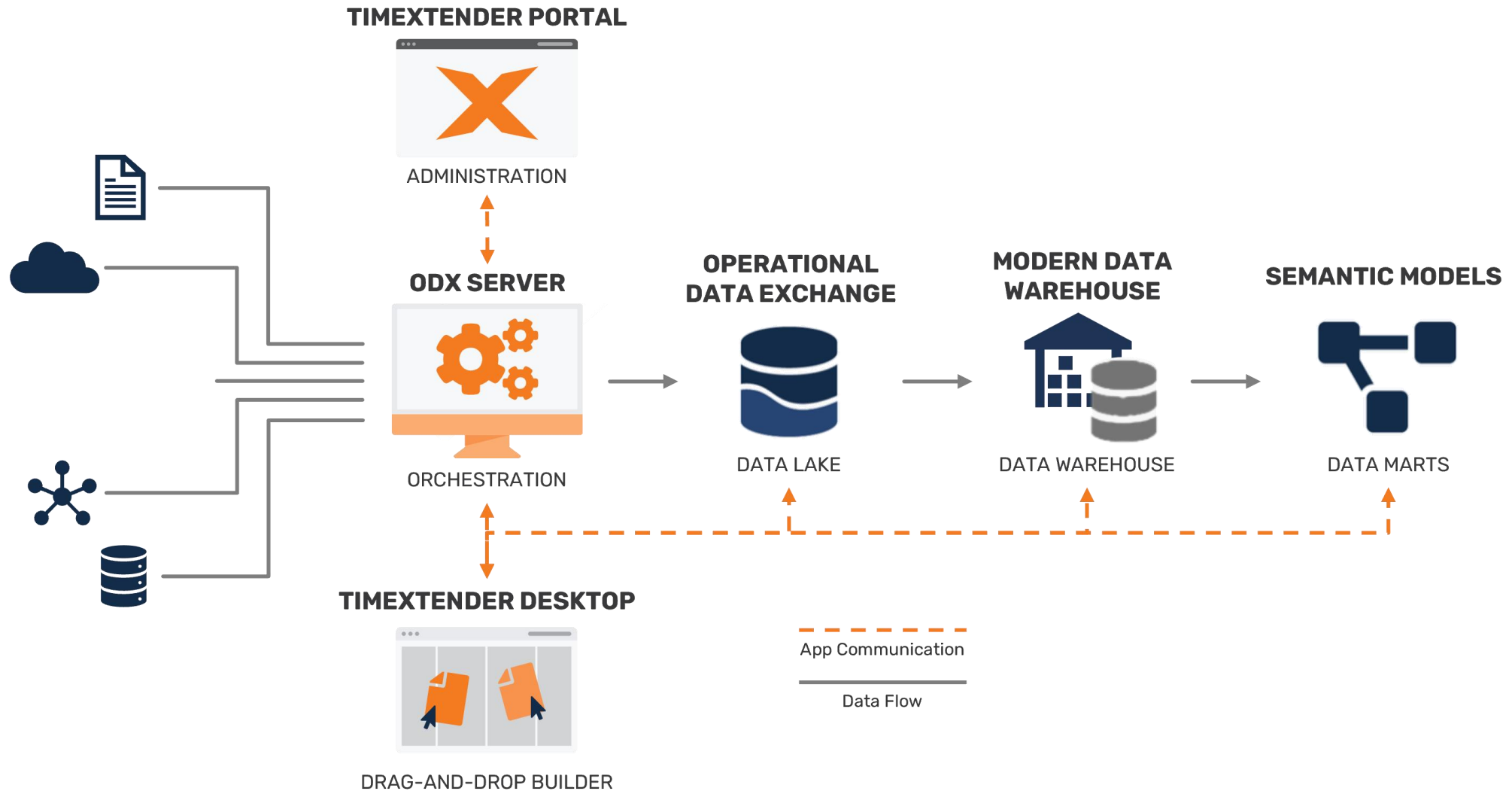
At Rockfeather, we see TimeXtender as the next step in data maturity. If you want to grow your data warehouse professionally, consider using this tool. It also saves you time compared to traditional ways of building data warehouses, which is the most significant advantage. It is easy to orchestrate the processes to run and maintain your data warehouse.



# A complete integrated data management platform structure

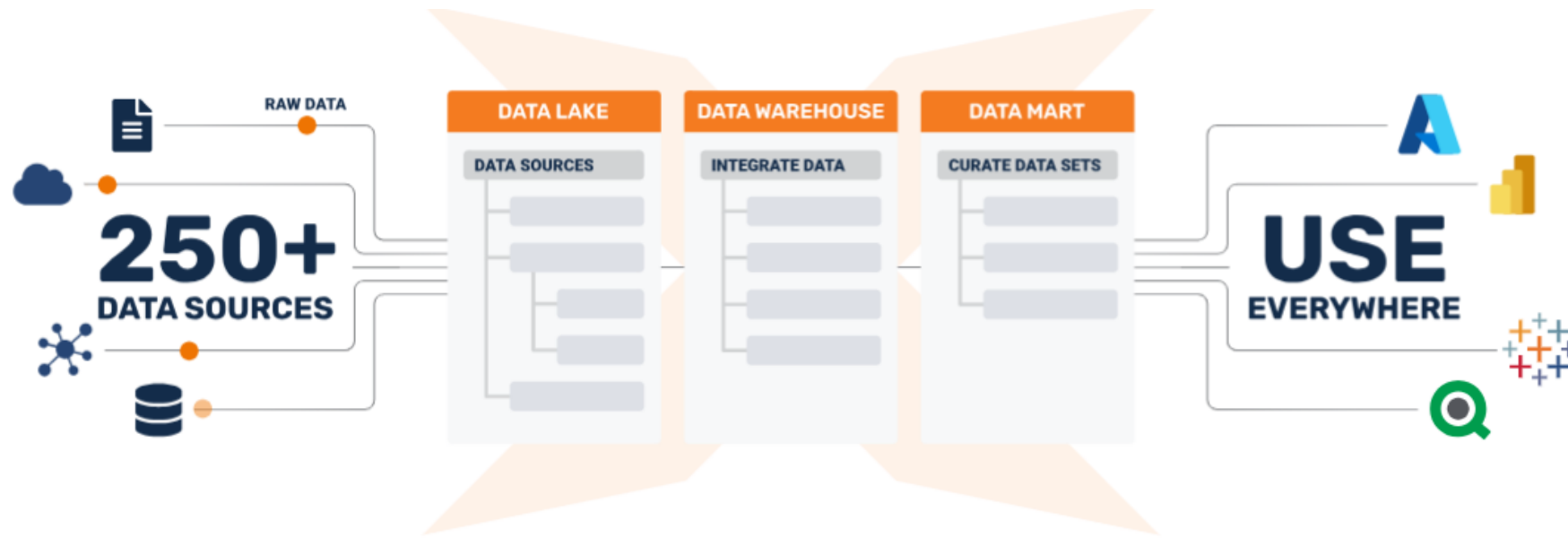


# TimeXtender structure





# TimeXtender simplified



**1.**

## Ingest Your Data

Consolidate raw data into one, centralized data lake.

**2.**

## Prepare Your Data

Cleanse, validate, enrich, transform, and model the data.

**3.**

## Deliver Your Data

Create data marts that deliver only the relevant subset of data.

---

Do you even need TimeXtender with all these cool players?



---

# 1. Ingest Your Data

The **Ingestion layer** is where TimeXtender consolidates raw data from disconnected sources into one, centralized **data lake or lakehouse**.

- Easily Consolidate Data from Disconnected Sources
- Universal Connectivity
- Automate Ingestion Tasks
- Accelerate Data Transfers with Incremental Load

1.

**Ingest Your Data**

---

## 2. Prepare Your Data

The **Preparation layer** is where you cleanse, validate, enrich, transform, and model the data into a "single version of truth" inside your **data warehouse**.

- Turn Raw Data Into a Single Version of Truth
- Powerful Data Transformations with Minimal Coding
- A Modern Approach to Data Modeling

# 2.

## Prepare Your Data

Cleanse, validate, enrich, transform,  
and model the data.

---

## 3. Deliver Your Data

The **Delivery layer** provides your entire organization with a simplified, consistent, and business-friendly view of all the **data products** available to your organization. This Semantic Layer maximizes data discovery and usability, ensures data quality, and aligns technical and non-technical teams around a common data language.

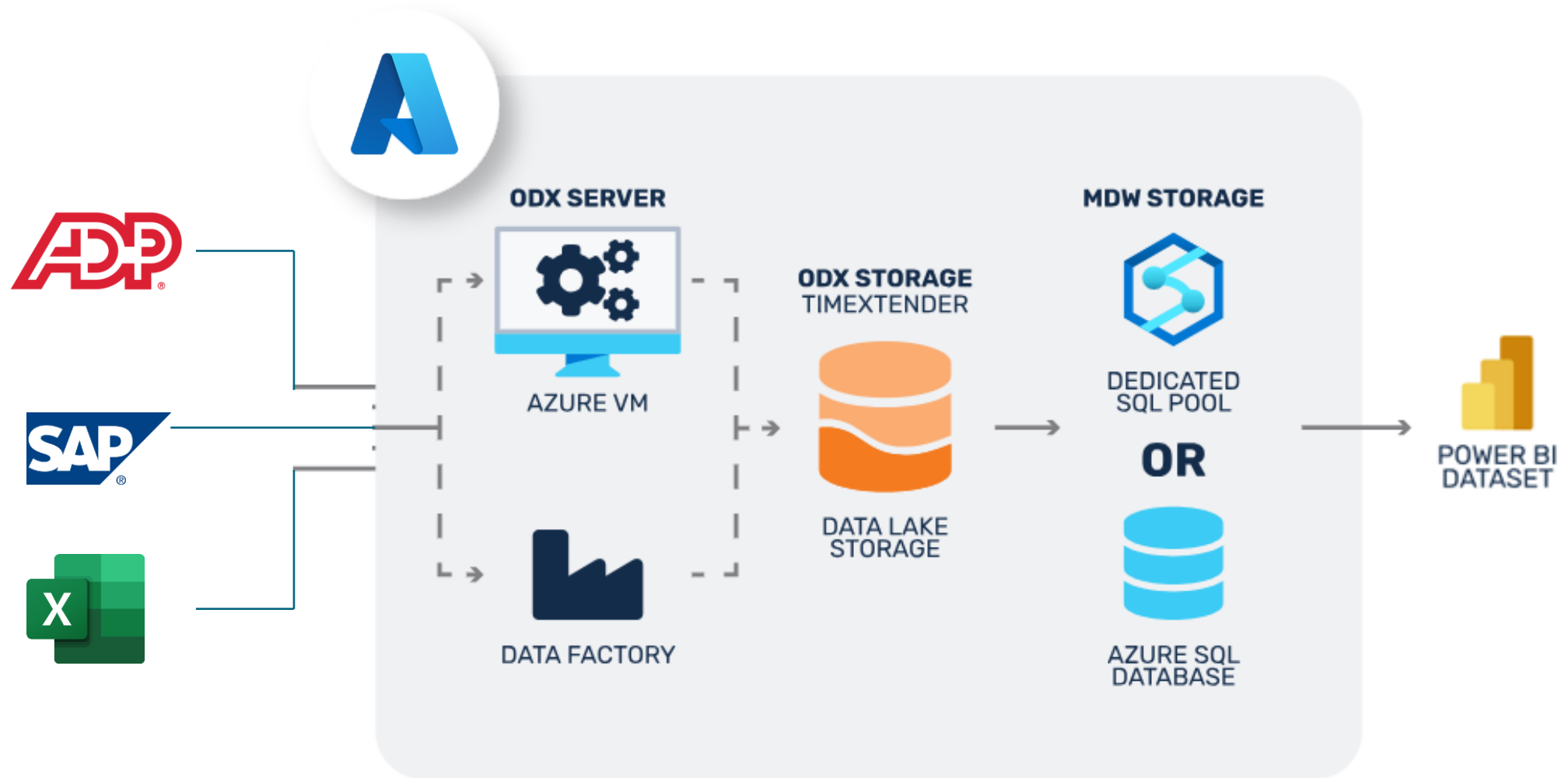
- Maximize Data Usability
- Increase Agility with Data Marts
- Deploy to Your Choice of Visualization Tools like PowerBi or Tableau

# 3.

## Deliver Your Data

Create data marts that deliver only the relevant subset of data.

# Example of a TimeXtender architecture

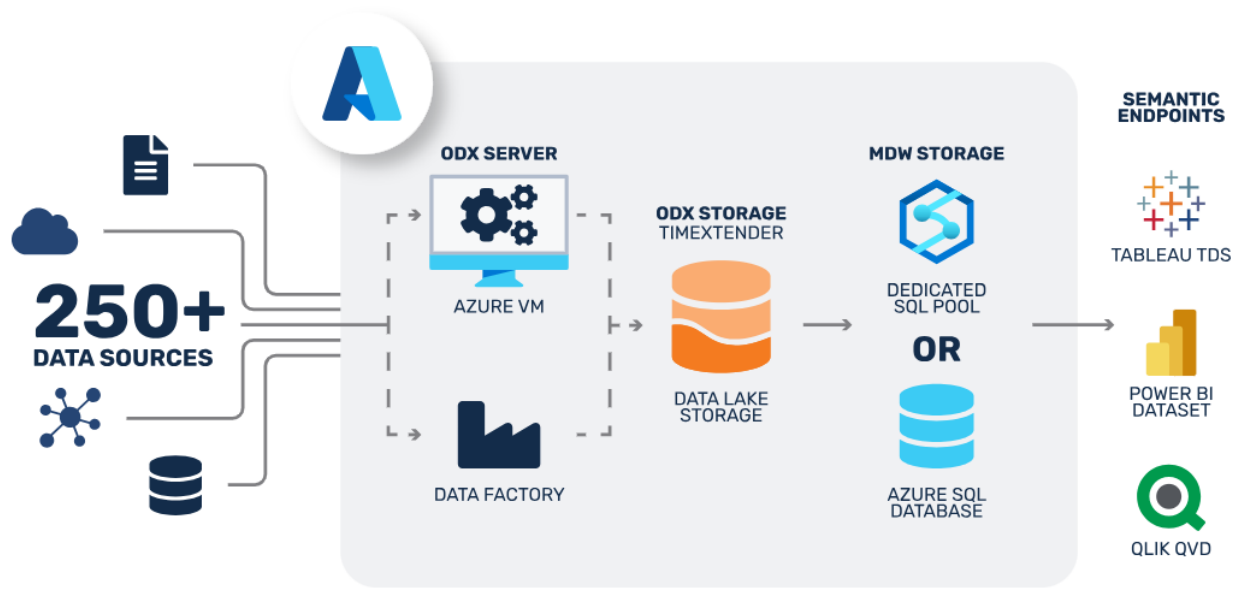


---

# TimeXtender solution for a consumer goods Manufacturer

## Background:

- A global manufacturer and distributor of consumer goods with diverse product lines.
- Struggles with fragmented sales data, market trend analysis, and inventory management.



## Solution & key features

- **Sales Data Integration:** Automates the consolidation of sales data from global markets, e-commerce platforms, and retail partners.
- **Market Trend Analysis:** Facilitates advanced analytics to quickly identify and respond to changing market trends and consumer preferences in PowerBi.
- **Inventory Optimization:** Integrates and analyzes inventory and sales data to optimize stock levels and reduce costs.



---

## TimeXtender solution for a consumer goods Manufacturer

### Outcome:

- Unified sales and inventory data across all channels.
- Direct availability of the data in your report to make business decisions.
- Improved inventory management resulting in cost savings.

---

## The greatest benefits

1. **Time-saving:** Automation of the data pipeline eliminates many manual and time-consuming tasks.
2. **Improved data quality and consistency:** Automatic data integration and modeling reduce errors and increase consistency in the data.
3. **Flexibility and scalability:** The platform is designed to grow with your organization, making it easily adaptable to changing needs.



---

## Modernizing the data warehouse and architecture at Axxence

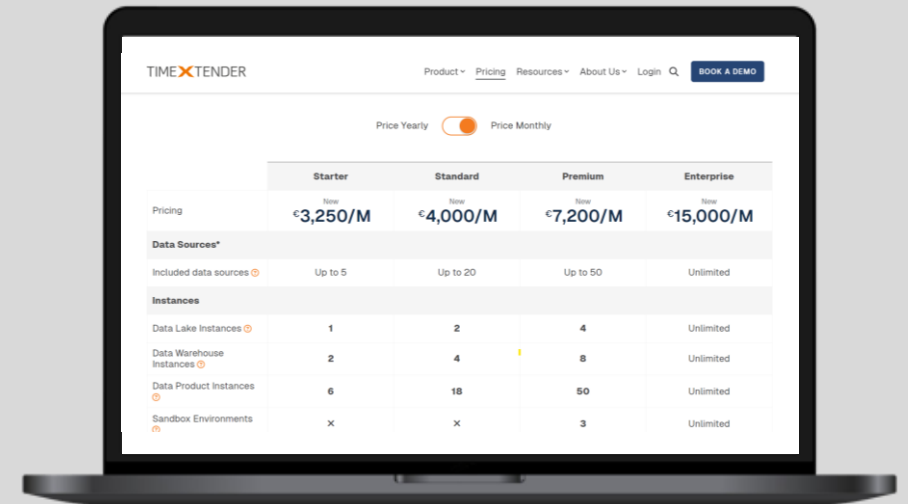
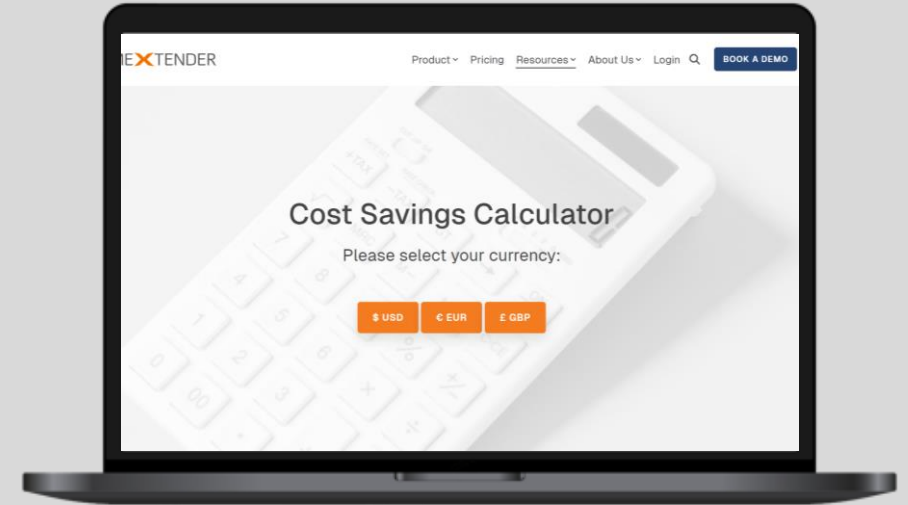
- Collecting fourteen different data sources in a single environment.
- Building data models using the semantic layer in TimeXtender Desktop
- Actively monitoring using email notifications in case of a breakdown or failure.



# TimeXtender Costs

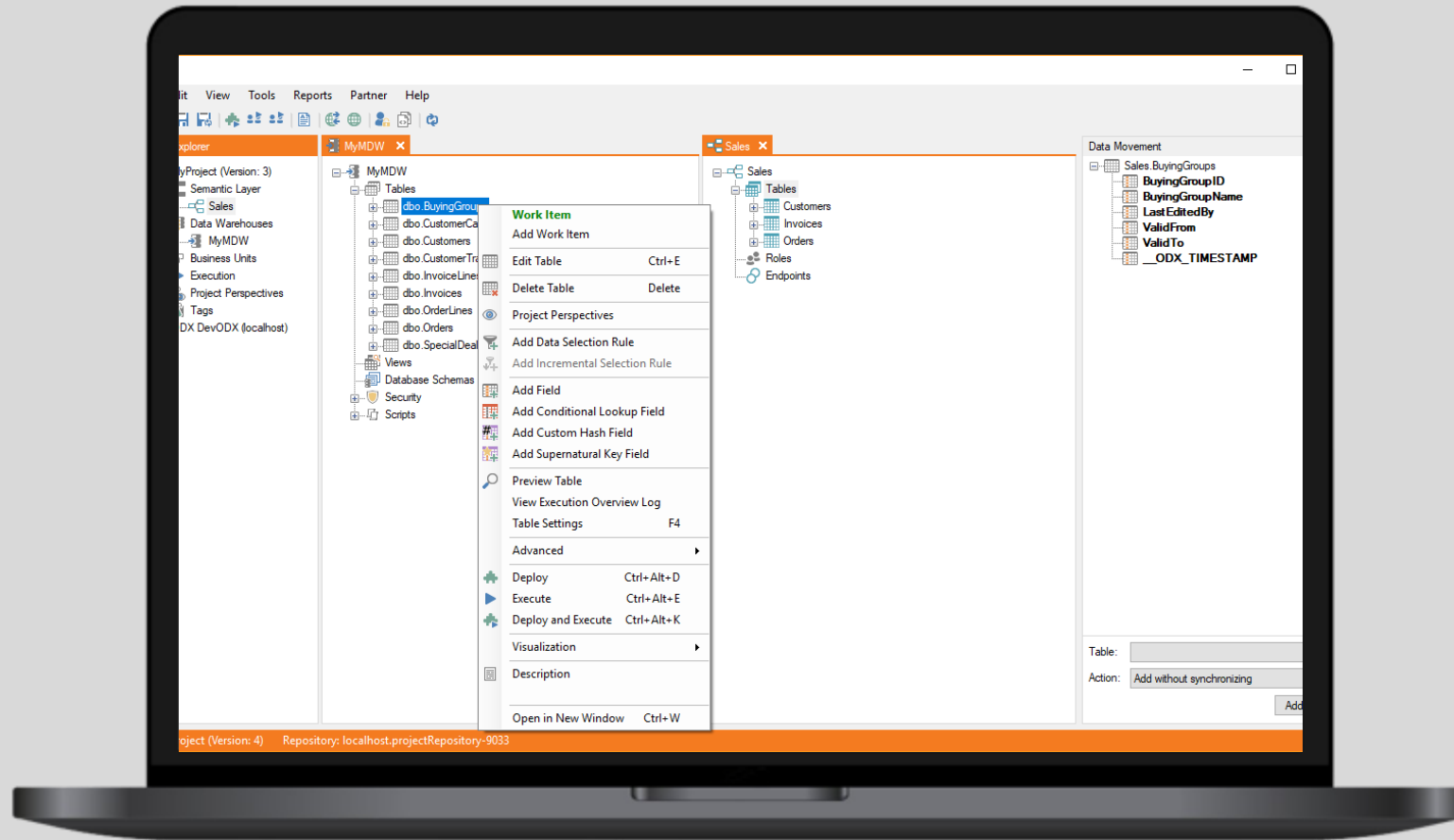
<https://www.timextender.com/pricing>

<https://www.timextender.com/calculator-in-eur>



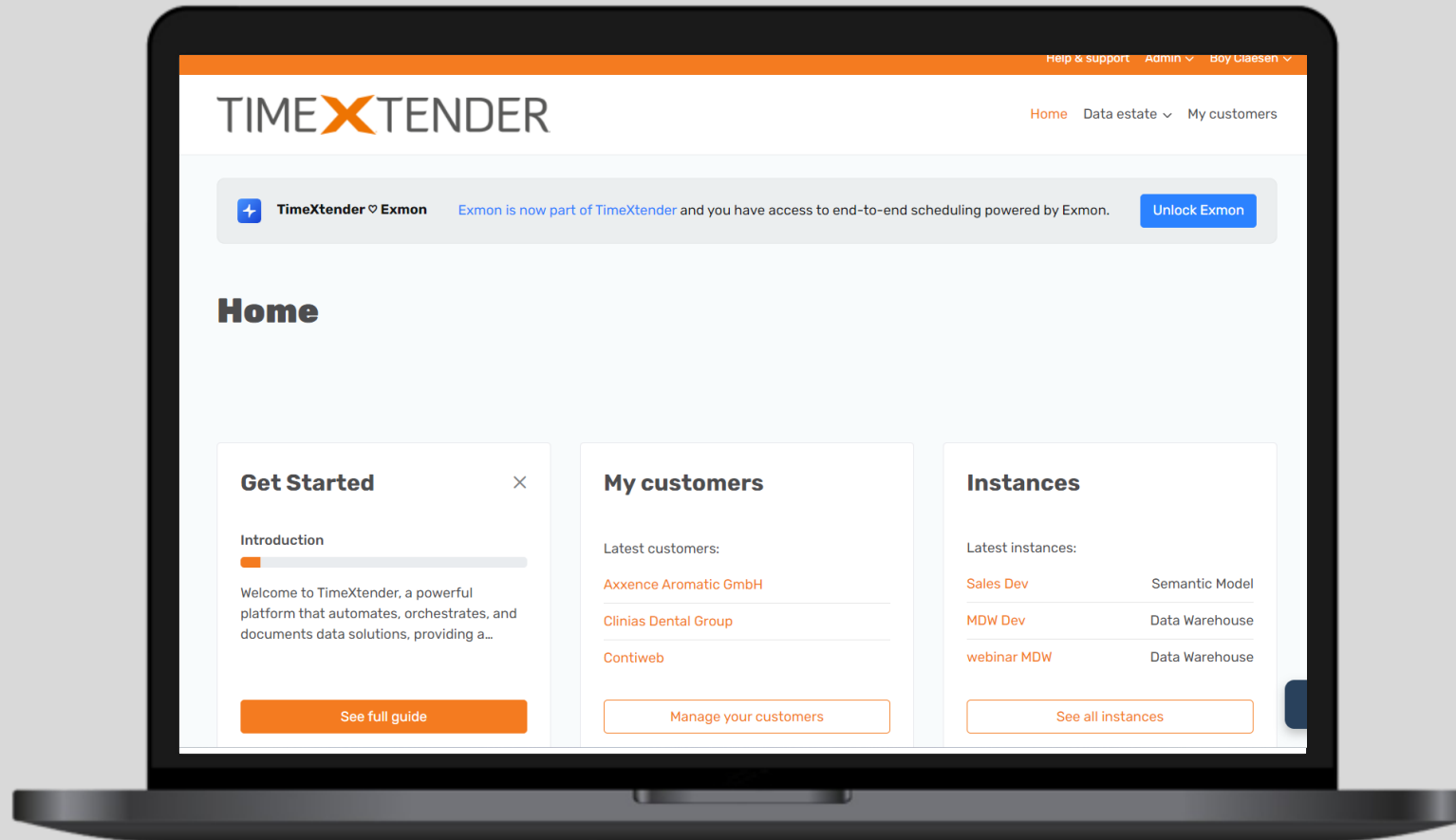


TimeXtender





# TimeXtender- demo





## Contact details

Boy Claesen  
boy.claesen@rockfeather.com

